

REGIONAL SPECIALISED METEOROLOGICAL CENTRE-TROPICAL CYCLONES, NEW DELHI
TROPICAL WEATHER OUTLOOK

DEMS-RSMC TROPICALCYCLONES NEW DELHI DATED 15.09.2022

TROPICAL WEATHER OUTLOOK FOR NORTH INDIAN OCEAN (THE BAY OF BENGAL AND ARABIAN SEA) VALID FOR NEXT 120 HOURS ISSUED AT 0600 UTC OF 15.09.2022 BASED ON 0300 UTC OF 15.09.2022.

BAY OF BENGAL:

YESTERDAY'S WELL MARKED LOW PRESSURE AREA OVER NORTHWEST MADHYA PRADESH & NEIGHBOURHOOD PERSISTS AND THE ASSOCIATED CYCLONIC CIRCULATION EXTENDS UPTO 5.8 KM ABOVE MEAN SEA LEVEL. DUE TO ITS LIKELY INTERACTION WITH THE TROUGH IN MIDDLE LATITUDE WESTERLIES, THE SYSTEM IS LIKELY TO RECURVE GRADUALLY NORTH-NORTHEASTWARDS TOWARDS EAST UTTAR PRADESH DURING NEXT 72 HOURS

SCATTERED TO BROKEN LOW AND MEDIUM CLOUDS WITH EMBEDDED INTENSE TO VERY INTENSE CONVECTION LAY OVER NORTH & CENTRAL BAY OF BENGAL. SCATTERED LOW AND MEDIUM CLOUDS WITH EMBEDDED MODERATE TO INTENSE CONVECTION LAY OVER SOUTHEAST BAY OF BENGAL & ANDAMAN SEA.

PROBABILITY OF CYCLOGENESIS (FORMATION OF DEPRESSION) DURING NEXT 120 HRS:

24 HOURS	24-48 HOURS	48-72 HOURS	72-96 HOURS	96-120 HOURS
NIL	NIL	NIL	NIL	NIL

ARABIAN SEA:

SCATTERED TO BROKEN LOW AND MEDIUM CLOUDS WITH EMBEDDED INTENSE TO VERY INTENSE CONVECTION LAY OVER NORTHEAST ARABIAN SEA. SCATTERED LOW AND MEDIUM CLOUDS WITH EMBEDDED MODERATE TO INTENSE CONVECTION LAY OVER GULF OF KUTCH .GULF OF CAMBAY, EASTCENTRAL ARABIAN SEA AND WEAK TO MODERATE CONVECTION LAY OVER WESTCENTRAL ARABIAN SEA.

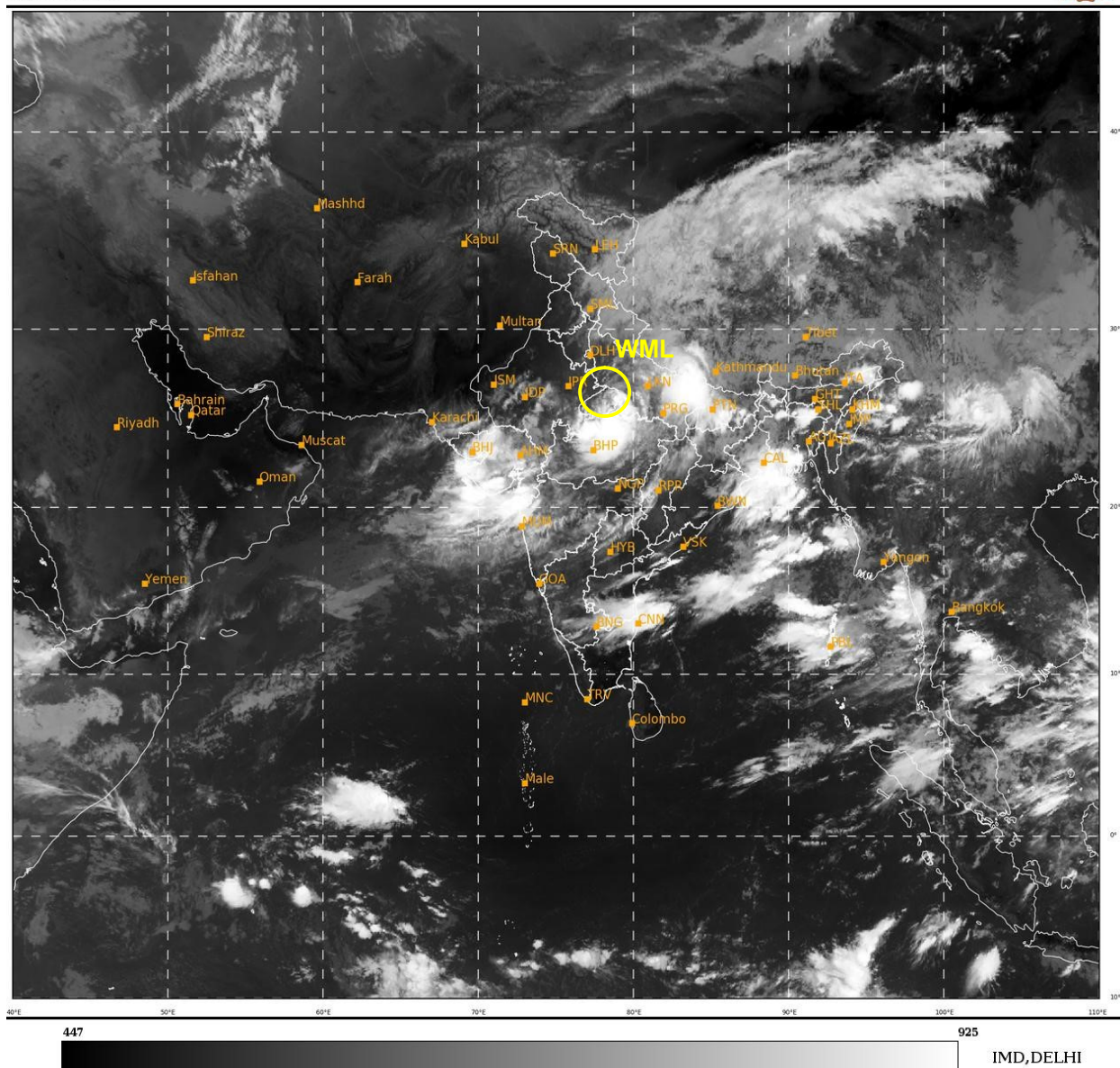
PROBABILITY OF CYCLOGENESIS (FORMATION OF DEPRESSION) DURING NEXT 120 HRS:

24 HOURS	24-48 HOURS	48-72 HOURS	72-96 HOURS	96-120 HOURS
NIL	NIL	NIL	NIL	NIL

Remarks: NIL

SAT : INSAT-3D IMG
 IMG_TIR1 10.8 um
 L1C Mercator

15-09-2022/(0300 to 0326) GMT
 15-09-2022/(0830 to 0856) IST



WML: WELL MARKED LOW PRESSURE AREA

Cloud distribution: (a) Isolated: <25%, Scattered:25-50%, Broken: 51-75%, Solid:>75%, Convection Intensity: (a) Weak: Cloud Top Temperature (CTT) >-25°C, (b) Moderate: CTT: - 25°C to -40°C, (c) Intense: CTT: - 41°C to -70°C and (d) Very Intense: : Less than -70°C
 PROBABILITY OF CYCLOGENESIS (FORMATION OF DEPRESSION):NIL: 0%, LOW: 1-33%, , MODERATE: 34-66% AND HIGH: 67-100%
 This is a guidance Bulletin for WMO/ESCAP Panel Member countries. Visit respective National websites for Country specific Bulletins